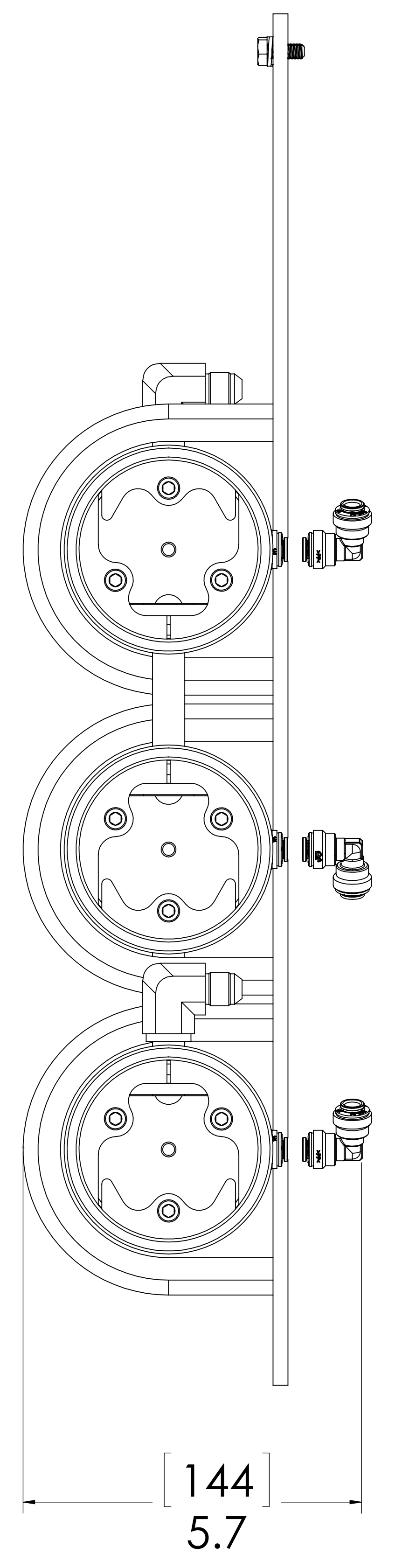
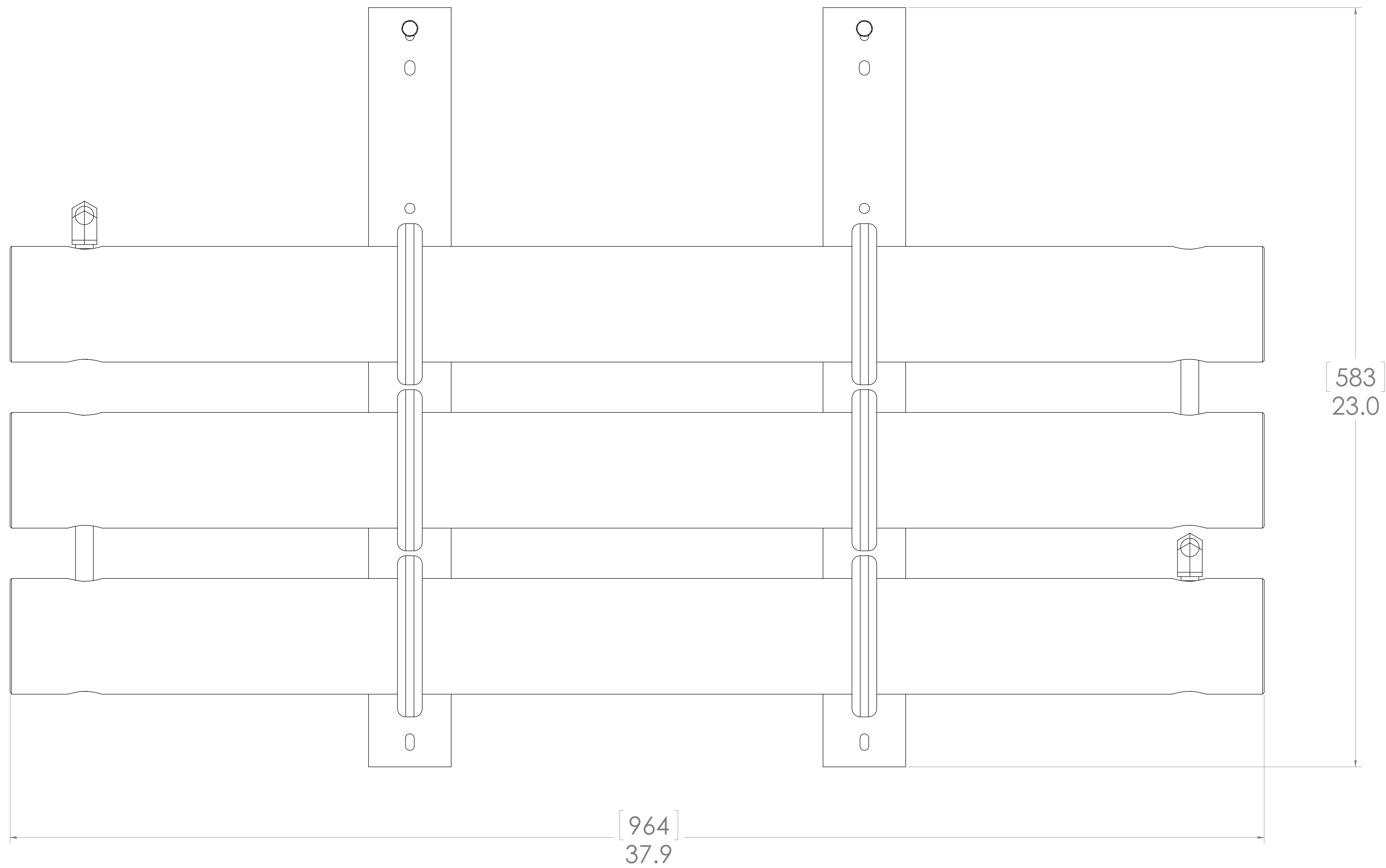


REVISIONS				
ZONE	REV.	DESCRIPTION	DATE	APPROVED
-	-	INITIAL RELEASE	1/30/2015	RC/CO



ITEM NO.	PartNo	DESCRIPTION	QTY.
1	F110416	BRACKET, 3 IN, MEM, QUAD	2
2	F1110407	BRACKET, MEMBRANE, U-CLAMP	6
3	G18382523	SCREW, ALLEN FLAT, 1/4"-20 X 5/8,SS	12
4	C130106	VESSEL, MEMBRANE, HP, 3803	3
5	F100605	END PLUG, 3IN, DUAL	2
6	G220313	O-RING, 116, NBR	6
7	FF1201	LOCKING RING, ASSY, 3"	6
8	F110403	BRACKET, O-RING LOCK, 56	6
9	G18142423	SCREW, SC, 1/4"-20 X 5/8,SS	18
10	G18192123	BOLT, HEX, 1/4"-20 X 5/8,SS	2
11	G18120121	WASHER,LOCK, .25,SS,SLDPRT	2
12	F100607	END PLUG, 3IN, DUAL, LEFT	1
13	F100604	END PLUG, 3IN, SINGLE	3
14	B193503	CONN, DUAL, O-RING, B5	2
15	B122509	ADAP, .25 TUBE X .25 MNPT, QK	3
16	B101109	ELB90, .25 TUBE, QK, SLDPRT	3
17	B121404	ADAP, O-RING, 85 X .25 NPT	2
18	B101503	ELB90, -6 X 1/4 FNPT, SS	2
19	C110116	MEMBRANE, RO, SW, 3103	4
20	G220335	O-RING, 230, NBR	12
21	G220135	O-RING, U-SEAL, 2.56 X 3 X2.18 NBR	3
22	G220312	O-RING, 115, EPR	12

NOTICE OF CONFIDENTIALITY
 THE INFORMATION CONTAINED IN THIS DRAWING IS THE SOLE PROPERTY OF BLUE WATER DESALINATION LLC. ANY REPRODUCTION, CIRCULATION, AND DISTRIBUTION IN PART OR AS A WHOLE WITHOUT THE WRITTEN CONSENT OF BLUE WATER DESALINATION LLC IS STRICTLY PROHIBITED.

Blue Water
 MEM, ASSY, 2100-3, TRI

UNLESS OTHERWISE SPECIFIED:
 DIMENSIONS ARE IN INCHES AND FRACTIONS
 UNLESS OTHERWISE SPECIFIED:
 FINISH: 1/16" ± 0.0015"
 1/8" ± 0.002"
 3/16" ± 0.003"
 1/4" ± 0.004"
 5/16" ± 0.005"
 3/8" ± 0.006"
 1/2" ± 0.008"
 5/8" ± 0.010"
 3/4" ± 0.012"
 7/8" ± 0.015"
 1" ± 0.015"

APPROVALS: _____ DATE: _____
 DRAWN: _____
 CHECK: _____
 DIMS: _____
 QUAL: _____
 CHIEF: _____

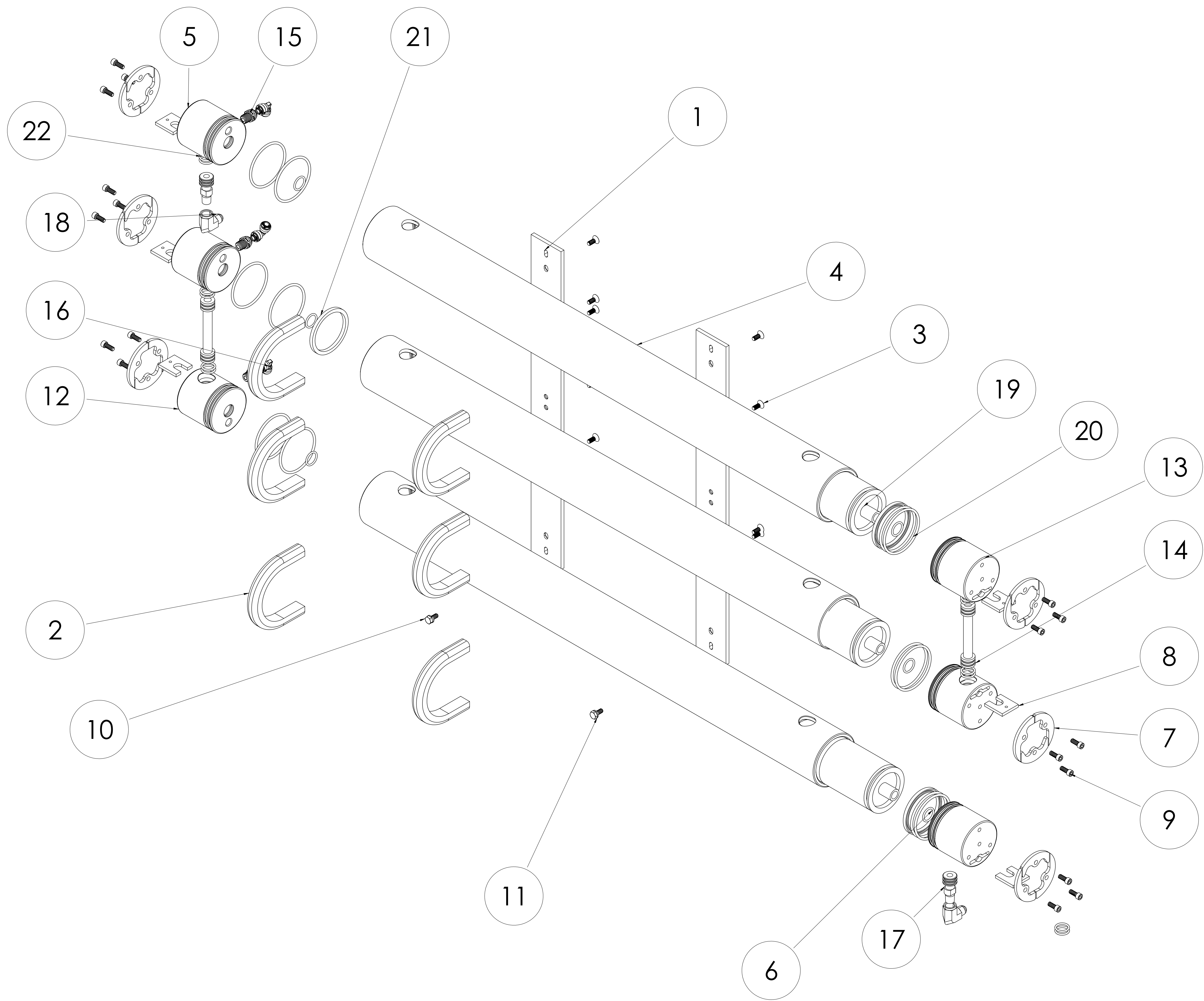
MATERIAL: _____
 FINISH: _____

DO NOT SCALE DRAWING

SCALE: _____ WEIGHT: _____

SIZE: **E** DRAWING NUMBER: **FL1535** REV: **NR**
 SHEET 1 OF 2

REVISIONS				
ZONE	REV.	DESCRIPTION	DATE	APPROVED
-	-	INITIAL RELEASE	1/30/2015	RC/CO



ITEM NO.	PartNo	DESCRIPTION	QTY.
1	F110416	BRACKET, 3 IN, MEM, QUAD	2
2	F1110407	BRACKET, MEMBRANE, U-CLAMP	6
3	G18382523	SCREW, ALLEN FLAT, 1/4"-20 X 5/8,SS	12
4	C130106	VESSEL, MEMBRANE, HP, 3803	3
5	F100605	END PLUG, 3IN, DUAL	2
6	G220313	O-RING, 116, NBR	6
7	FF1201	LOCKING RING, ASSY, 3"	6
8	F110403	BRACKET, O-RING LOCK, 56	6
9	G18142423	SCREW, SC, 1/4"-20- X 5/8,SS	18
10	G18192123	BOLT, HEX, 1/4"-20 X 5/8,SS	2
11	G18120121	WASHER, LOCK, .25,SS,SLDPRT	2
12	F100607	END PLUG, 3IN, DUAL, LEFT	1
13	F100604	END PLUG, 3IN, SINGLE	3
14	B193503	CONN, DUAL, O-RING, B5	2
15	B122509	ADAP, .25 TUBE X .25 MNPT, QK	3
16	B101109	ELB90, .25 TUBE, QK, SLDPRT	3
17	B121404	ADAP, O-RING, 85 X .25 NPT	2
18	B101503	ELB90, -6 X 1/4 FNPT, SS	2
19	C110116	MEMBRANE, RO, SW, 3103	4
20	G220335	O-RING, 230, NBR	12
21	G220135	O-RING, U-SEAL, 2.56 X 3 X2.18 NBR	3
22	G220312	O-RING, 115, EPR	12

NOTICE OF CONFIDENTIALITY
 THE INFORMATION CONTAINED IN THIS DRAWING IS THE SOLE PROPERTY OF BLUE WATER DESALINATION LLC. ANY REPRODUCTION, CIRCULATION, AND DISTRIBUTION IN PART OR AS A WHOLE WITHOUT THE WRITTEN CONSENT OF BLUE WATER DESALINATION LLC IS STRICTLY PROHIBITED.

Blue Water
 MEM, ASSY, 2100-3, TRI

UNLESS OTHERWISE SPECIFIED:
 DIMENSIONS ARE IN INCHES AND DECIMALS THEREOF UNLESS OTHERWISE SPECIFIED.
 FINISH: UNLESS OTHERWISE SPECIFIED, ALL SURFACES SHALL BE FINISHED TO A 32 RMS SURFACE FINISH.
 APPROVALS: _____ DATE: _____

MATERIAL: _____
 DRAWN: _____
 CHECK: _____
 QVAL: _____
 CHEF: _____

SCALE: _____ WEIGHT: _____

REV NR
 SHEET 2 OF 2