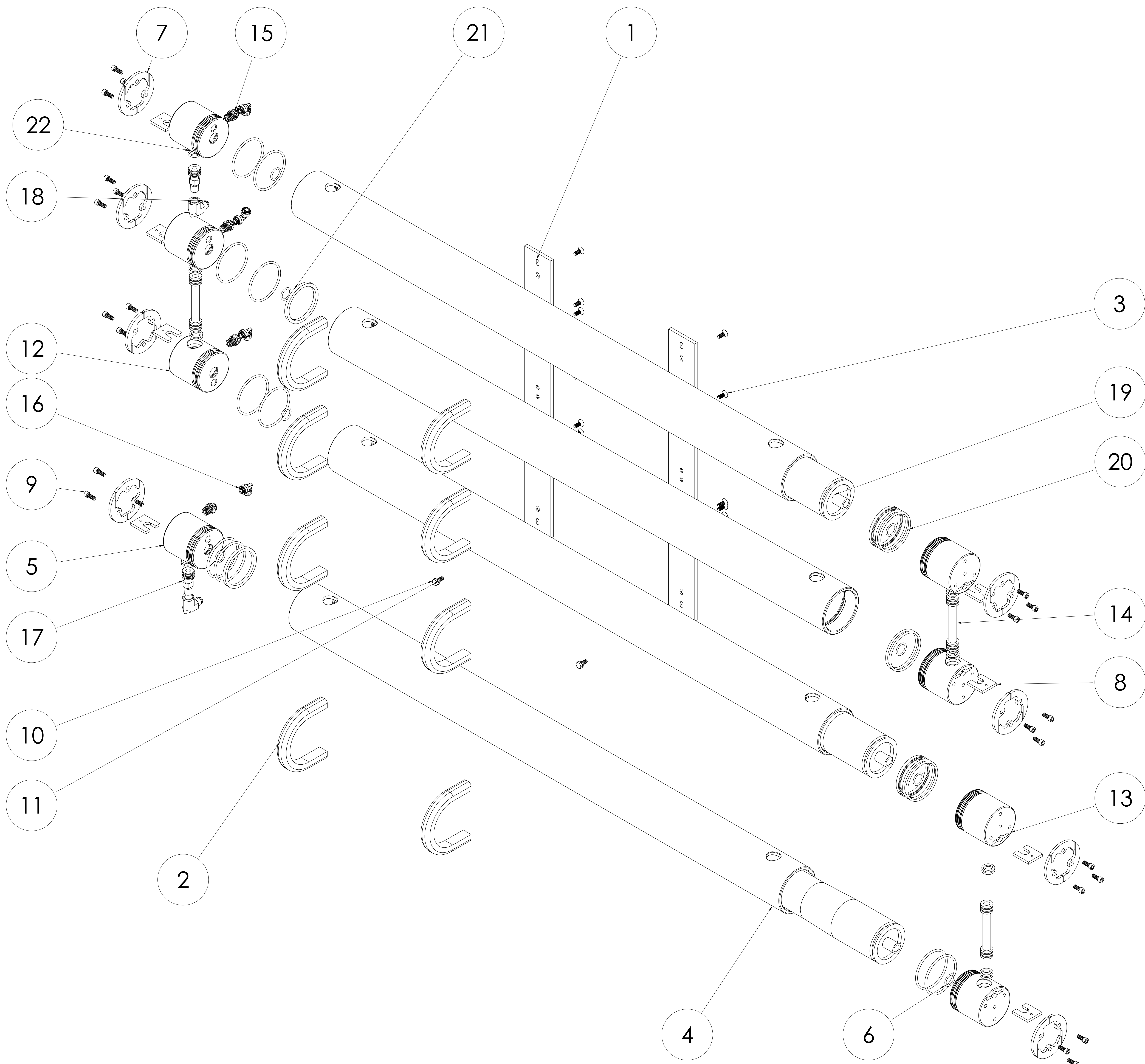


| REVISIONS | | | | |
|-----------|------|-----------------|-----------|----------|
| ZONE | REV. | DESCRIPTION | DATE | APPROVED |
| - | - | INITIAL RELEASE | 1/30/2015 | RC/CO |



| ITEM NO. | PartNo | DESCRIPTION | QTY. |
|----------|-----------|-------------------------------------|------|
| 1 | F110416 | BRACKET, 3 IN, MEM, QUAD | 2 |
| 2 | F1110407 | BRACKET, MEMBRANE, U-CLAMP | 8 |
| 3 | G18382523 | SCREW, ALLEN FLAT, 1/4"-20 X 5/8,SS | 16 |
| 4 | C130107 | VESSEL, MEMBRANE, HP, 4703-STRAIGHT | 4 |
| 5 | F100605 | END PLUG, 3IN, DUAL | 3 |
| 6 | G220313 | O-RING, 116, NBR | 8 |
| 7 | FF1201 | LOCKING RING, ASSY, 3" | 8 |
| 8 | F110403 | BRACKET, O-RING-LOCK, 56 | 8 |
| 9 | G18142423 | SCREW, SC, 1/4"-20- X 5/8,SS | 24 |
| 10 | G18192123 | BOLT, HEX, 1/4"-20 X 5/8,SS | 2 |
| 11 | G18120121 | WASHER, LOCK, .25,SS,S.LDPRT | 2 |
| 12 | F100607 | END PLUG, 3IN, DUAL, LEFT | 1 |
| 13 | F100604 | END PLUG, 3IN, SINGLE | 4 |
| 14 | B193503 | CONN, DUAL, O-RING, 85 | 3 |
| 15 | B122509 | ADAP, .25 TUBE X .25 MNPT, QK | 4 |
| 16 | B101109 | ELB90, .25 TUBE, QK, S.LDPRT | 4 |
| 17 | B121404 | ADAP, O-RING, 85 X .25 NPT | 2 |
| 18 | B101503 | ELB90, -6 X 1/4 FNPT, SS | 2 |
| 19 | C110117 | MEMBRANE, RO, SW,4003 | 4 |
| 20 | G220335 | O-RING, 230, NBR | 16 |
| 21 | G220135 | SEAL, BRINE, 3IN | 4 |
| 22 | G220312 | O-RING, 115, EPR | 16 |

NOTICE OF CONFIDENTIALITY
 THE INFORMATION CONTAINED IN THIS DRAWING IS THE SOLE PROPERTY OF BLUE WATER DESALINATION LLC. ANY REPRODUCTION, CIRCULATION, AND DISTRIBUTION IN PART OR AS A WHOLE WITHOUT THE WRITTEN CONSENT OF BLUE WATER DESALINATION LLC IS STRICTLY PROHIBITED.

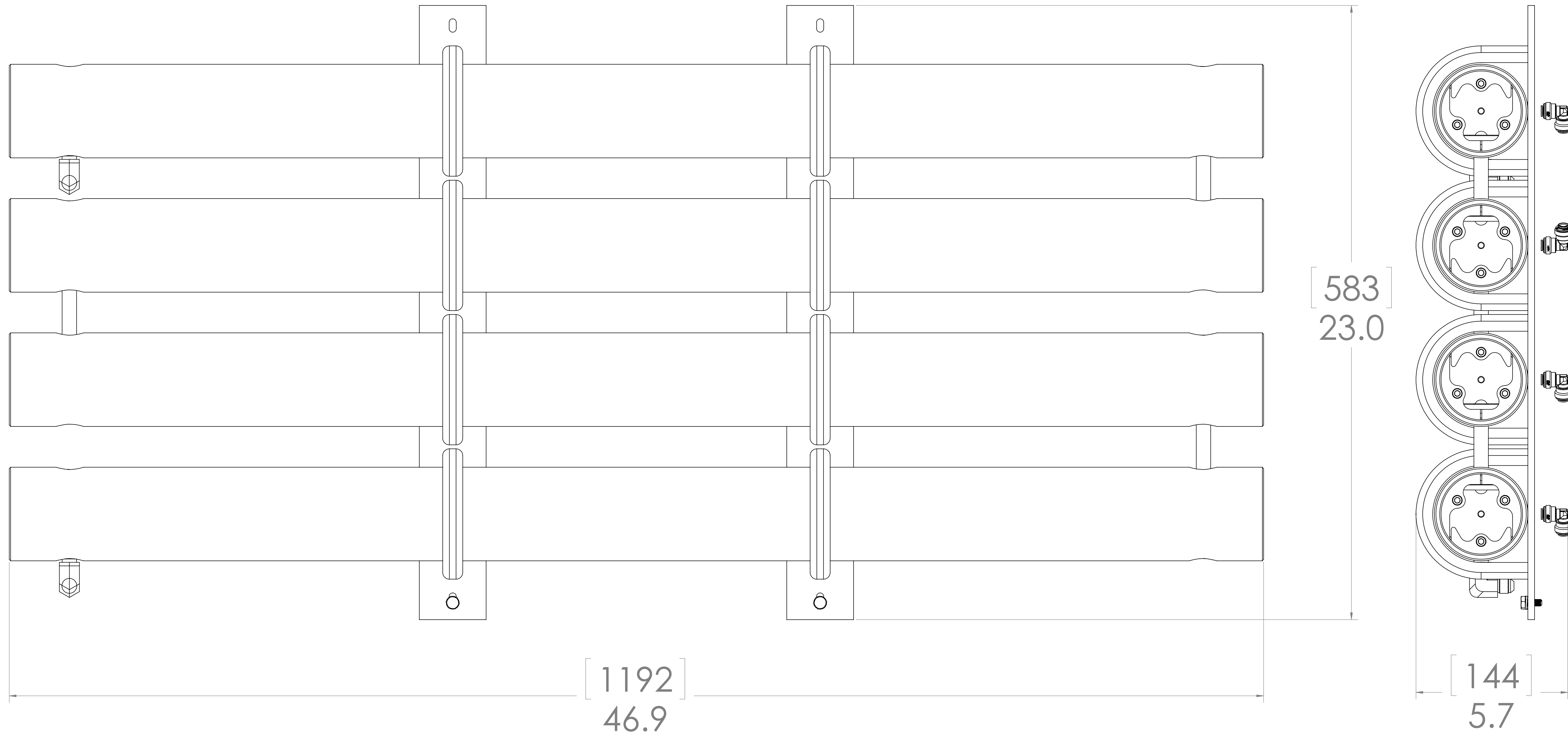
Blue Water
 DESALINATION LLC
 1000 S. CALIFORNIA SUITE 100
 CHENAY, CO 80601
 TEL: (303) 886-1474
 WWW.BLUEWATERDESALINATION.COM

MEM, ASSY, 3200-4

SIZE: **E** DRAWING NUMBER: **FL1541** REV: **-**
 SCALE: _____ WEIGHT: _____ SHEET 1 OF 2

DO NOT SCALE DRAWING

| REVISIONS | | | | |
|-----------|------|-----------------|-----------|----------|
| ZONE | REV. | DESCRIPTION | DATE | APPROVED |
| - | - | INITIAL RELEASE | 1/30/2015 | RC/CO |



| ITEM NO. | PartNo | DESCRIPTION | QTY. |
|----------|-----------|-------------------------------------|------|
| 1 | F110416 | BRACKET, 3 IN, MEM, QUAD | 2 |
| 2 | F1110407 | BRACKET, MEMBRANE, U-CLAMP | 8 |
| 3 | G18382523 | SCREW, ALLEN FLAT, 1/4"-20 X 5/8.SS | 16 |
| 4 | C130107 | VESSEL, MEMBRANE, HP, 4703-STRAIGHT | 4 |
| 5 | F100605 | END PLUG, 3IN, DUAL | 3 |
| 6 | G220313 | O-RING, 116, NBR | 8 |
| 7 | FF1201 | LOCKING RING, ASSY, 3" | 8 |
| 8 | F110403 | BRACKET, O-RING LOCK, 56 | 8 |
| 9 | G18142423 | SCREW, SC, 1/4"-20- X 5/8.SS | 24 |
| 10 | G18192123 | BOLT, HEX, 1/4"-20 X 5/8.SS | 2 |
| 11 | G18120121 | WASHER, LOCK, .25.SS.SLDPRT | 2 |
| 12 | F100607 | END PLUG, 3IN, DUAL, LEFT | 1 |
| 13 | F100604 | END PLUG, 3IN, SINGLE | 4 |
| 14 | B193503 | CONN, DUAL, O-RING, 85 | 3 |
| 15 | B122509 | ADAP, .25 TUBE X .25 MNPT, QK | 4 |
| 16 | B101109 | ELB90, .25 TUBE, QK.SLDPRT | 4 |
| 17 | B121404 | ADAP, O-RING, 85 X .25 NPT | 2 |
| 18 | B101503 | ELB90, -6 X 1/4 FNPT, SS | 2 |
| 19 | C110117 | MEMBRANE, RO, SW,4003 | 4 |
| 20 | G220335 | O-RING, 230, NBR | 16 |
| 21 | G220135 | SEAL BRINE, 3IN | 4 |
| 22 | G220312 | O-RING, 115, EPR | 16 |

NOTICE OF CONFIDENTIALITY
 THE INFORMATION CONTAINED IN THIS DRAWING IS THE SOLE PROPERTY OF BLUE WATER DESALINATION LLC. ANY REPRODUCTION, CIRCULATION, AND DISTRIBUTION IN PART OR AS A WHOLE WITHOUT THE WRITTEN CONSENT OF BLUE WATER DESALINATION LLC IS STRICTLY PROHIBITED.

Blue Water
 MEM, ASSY, 3200-4

19913, C:\DWG\1500-1000
 01/30/2015, 10:00 AM
 11/15/15, 10:00 AM
 www.BlueWaterDesalination.com

APPROVALS: DATE

DRAWN: _____
 CHECK: _____
 DESIGNED: _____
 QUAL: _____
 CHIEF: _____

SCALE: _____ WEIGHT: _____

SIZE: **E** DRAWING NUMBER: **FL1541** REV: **-**

DO NOT SCALE DRAWING SHEET 2 OF 2