

EXPRESS CM

FROM 750 TO 2,600 GPD OF PURE WATER

ULTRA PURE WATER
FOR ANY VESSEL



The Express ClearMate combines two of Blue Water Desalination's efficient watermaker systems into one convenient package. Using the same leading-edge technology as the popular Express Series, you can now produce ultra pure water from either seawater or dock water with the touch of a button.

3 MODES OF OPERATION

- Sea water to fresh water
- Sea water to ultra pure water
- Dock water to ultra pure water

HIGHLIGHTS

- Fully automatic operation
- Dual-feed capability from sea water or dock water
- Simple operation
- Compact design
- Designed for easy service and maintenance
- Fresh water flush system

OPTIONAL EQUIPMENT



REMOTE
CONTROL



COMMERCIAL
PREFILTER



MEDIA
FILTER



OIL WATER
SEPARATOR



FULL LINE OF WATERMAKERS
FROM 200 TO 6,200 GPD



WORLDWIDE SALES, PARTS
AND EXPERT SERVICE

EXPRESS CM

FROM 750 TO 2,600 GPD OF PURE WATER

DRAWINGS & SPECIFICATIONS

	Sea Water	Sea Water	Dock Water	Dock Water	
Model	Hourly Fresh Water Production	Daily Fresh Water Production	Hourly Ultra Pure Water Production	Daily Ultra Pure Water Production	Weight
ESCM 750/1000*	31 GPH 118 LPH	750 GPD 2,480 LPD	42 GPH 157 LPH	1,000 GPD 3,785 LPD	210 lb 95 kg
ESCM 950/1400*	40 GPH 150 LPH	950 GPD 3,600 LPD	42 GPH 157 LPH	1,400 GPD 5,300 LPD	215 lb 98 kg
ESCM 1500/1000	63 GPH 237 LPH	1,500 GPD 5,680 LPD	42 GPH 157 LPH	1,000 GPD 3,785 LPD	225 lb 102 kg
ESCM 1500/2000*	63 GPH 237 LPH	1,500 GPD 5,680 LPD	83 GPH 315 LPH	2,000 GPD 7,570 LPD	240 lb 109 kg
ESCM 1800/2600*	75 GPH 284 LPH	1,800 GPD 6,810 LPD	83 GPH 315 LPH	2,600 GPD 9,840 LPD	250 lb 114 kg

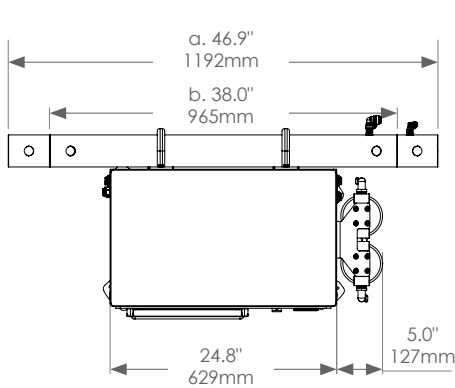
* Ultra Pure production from Sea Water will be significantly less than rated Dock Water Capacity.

Model	Booster Pump		HP Pump (Sea Water)		HP Pump (Fresh Water)		Run Amps	Start Amps	Run Amps	Start Amps
	HP	KW	HP	KW	HP	KW	From Sea Water		From Dock Water	
ALL (115V / 60Hz)	0.5	0.37	2.5	1.8	0.75	0.55	38	109	10	42
ALL (230V / 60/50Hz)	0.5	0.37	2.5	1.8	0.75	0.55	19	55	5	21

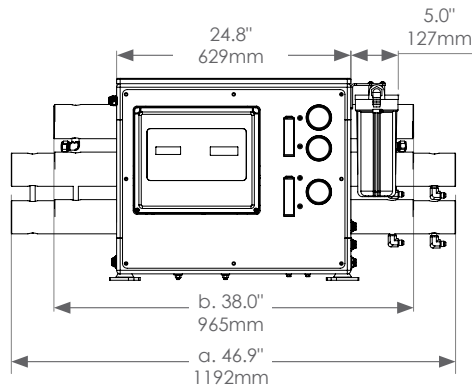
Vessel Assembly

a: 950 / 1800

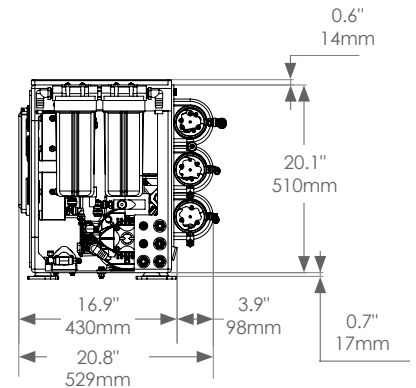
b: 750 / 1200 / 1500



Top View



Front View



Side View

MAR2025

ADDITIONAL DRAWINGS AVAILABLE AT: BLUEWATERDESALINATION.COM/WATERMAKERS/EXPRESS-CM